

**We develop proprietary  
tools and indicators  
for quantitative trading  
of Bitcoin and Altcoins.**



## INDEX

1. Trading Different presentation. What are Liquidation Pools/Liquidation Heatmap?
2. Development of Proprietary Indicators. Advantages.
3. Before and after the Liquidation Pools/Liquidation Heatmap.
4. Trading with the Liquidation Pools/Liquidation Heatmap.
5. Hone your Trading strategy with Liquidation Pools/Liquidation Heatmap.
6. Market Entry Point Improvement.
7. Take Profit Improvement.
9. Stop Loss improvement.
10. Crypto assets that can be traded with the Liquidation Pools/Liquidation Heatmap. Overview of the Liquidation Pools/Liquidation Heatmap.
11. Scalping chart menu.
12. Scalping chart. Help menu. Language selector and Backtest button.
13. Backtest button.
14. Liquidation Pool Filters: leverage.
15. Liquidation Pool Filters. Recommendations.
16. Filter by minimum liquidity.
17. Filter by minimum liquidity, different values.
18. Manual liquidity grouping.
19. Automatic grouping.
20. Filter by liquidity age.
21. Refresh function.
22. Show/Hide the Liquidation Pools in the chart.
23. Customization of colors.
24. Dark/light mode selection.
25. Drawing tools.
26. Swing Trading Chart.
27. Swing Trading chart: new algorithm.
28. TrenDiff trend indicator.
29. Volume Profile Indicator.
30. Historical Chart.
31. More Indicators.
32. Complement your own Trading systems with our Liquidation Pools.
33. Adding indicators from the TradingView library.
34. High Frequency Chart. Settings.
36. Conclusions
37. Contact and Social Networks.

# Trading Different

Trading Different is a platform that provides traders with unique tools and indicators in the crypto ecosystem, making their trading systems more efficient.

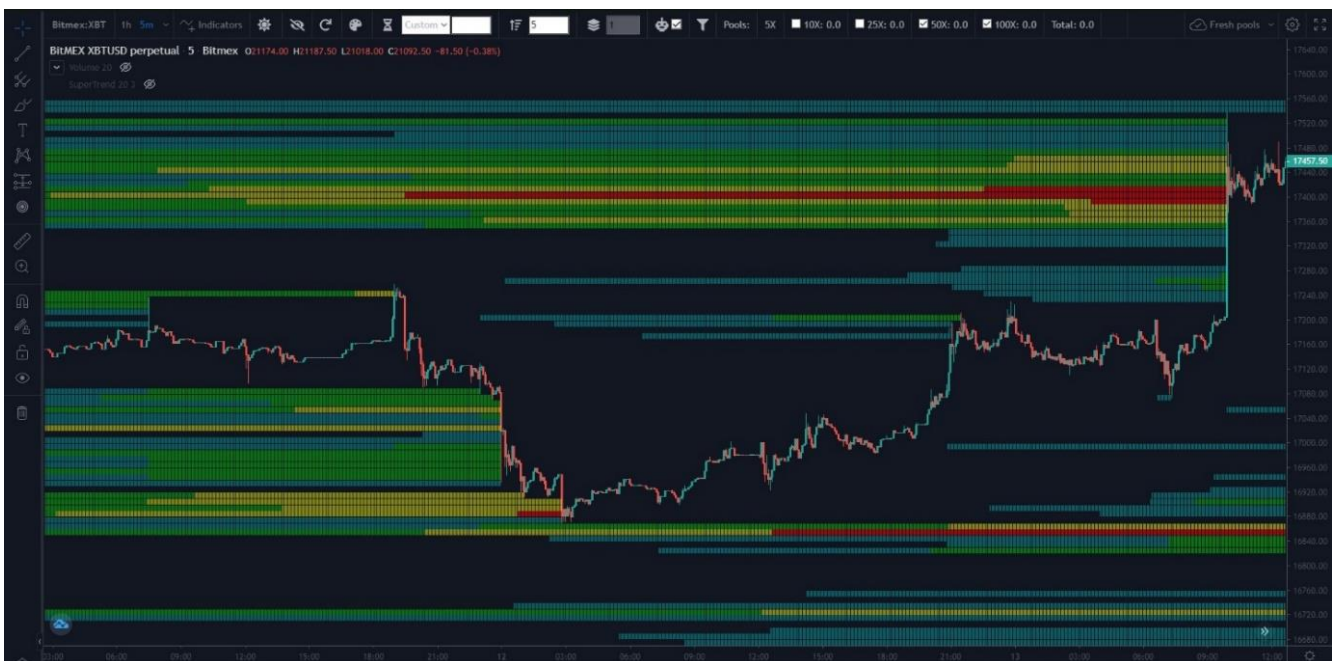
In Trading Different we know the importance of operating in the crypto market differently from the 90% of retailers who lose their capital. For this reason, through the Liquidation Pools, we offer innovative solutions by amplifying the market vision with a dynamic and real-time tool which adapts to the different needs of users, whether in swing or scalping, providing an advantage and allowing anticipations of price movements.

We are a team of engineers, developers and traders with a primary focus: to provide a wide range of tools that allow traders to analyze, visualize and make informed decisions in their operations.

## What are Liquidation Pools?

Liquidation Pools are an advanced tool for trading Bitcoin and the most important Altcoins, marking zones on the chart, which represent areas of higher liquidity within the crypto market. They are price zones that indicate, through a mathematical algorithm, where all the over-leveraged traders could lose based on their liquidation points and their Stop Losses.

Liquidation Pools are a creation and development of the Trading Different team. They allow traders to anticipate potential market manipulations and use this information to develop profitable trading strategies.



## Development of Own Indicators

The colored zones that can be seen in the chart are the Liquidation Pools, where a heat map represents areas of highest liquidity within the market, which act like a magnet for the price.

In the market there are two types of liquidity. It is important to describe them, to understand the information that the Liquidation Pools really provide us and not to confuse them with other service platforms:

- Liquidity reflected in the Order Book, these are Buy and Sell orders that have not yet entered the market. This service is offered by other platforms (you must to be careful with washtrading when using them).
- Liquidity that has already entered the market, reflected by the liquidation and stop losses prices. Stop Loss hunters take advantage of this liquidity (sometimes manipulating the market). This is the type of liquidity visible only with our Liquidation Pools.



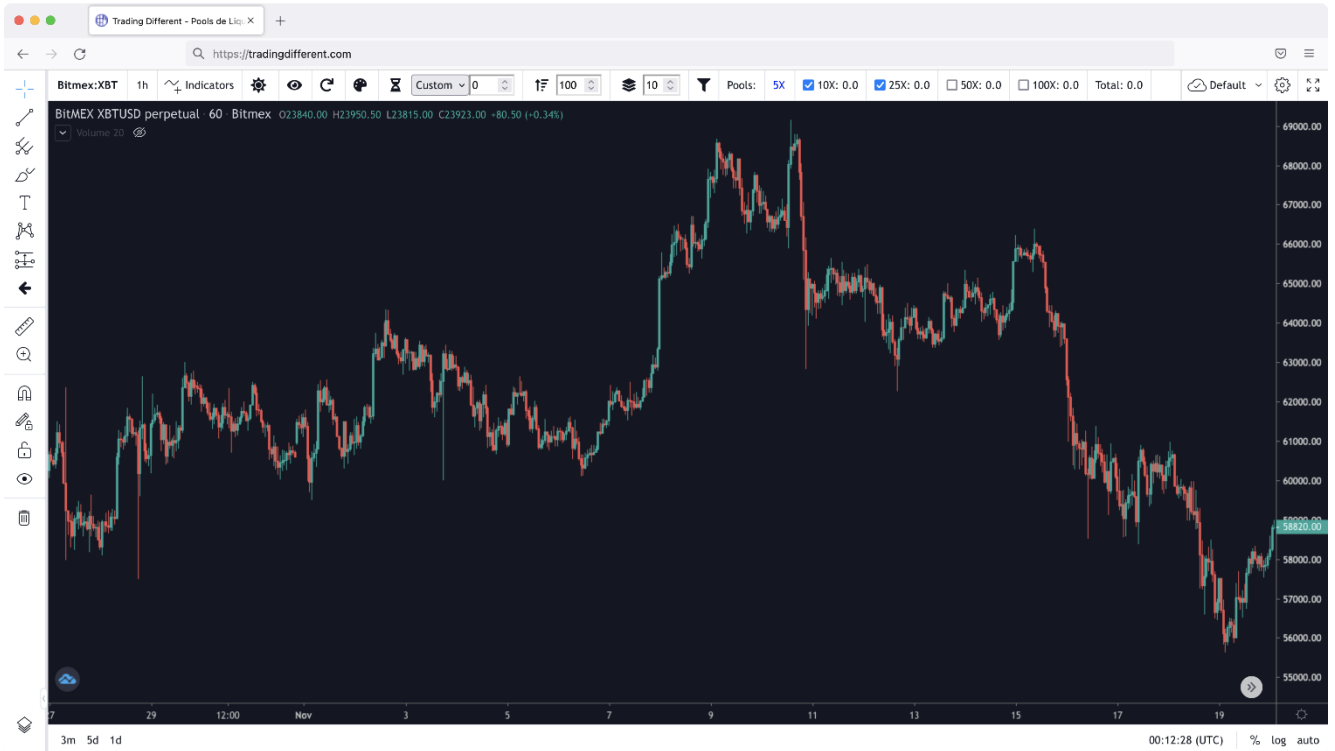
Trading Different offers unique indicators and tools for quantitative trading of Bitcoin and Altcoins. The detection of market deficiencies and manipulations through its algorithms allows traders to use them to their advantage. Quantitative trading is a trading system that uses mathematical and statistical models to trade markets.

### **What advantages are acquired by operating the Liquidation Pools/Liquidation Heatmap?**

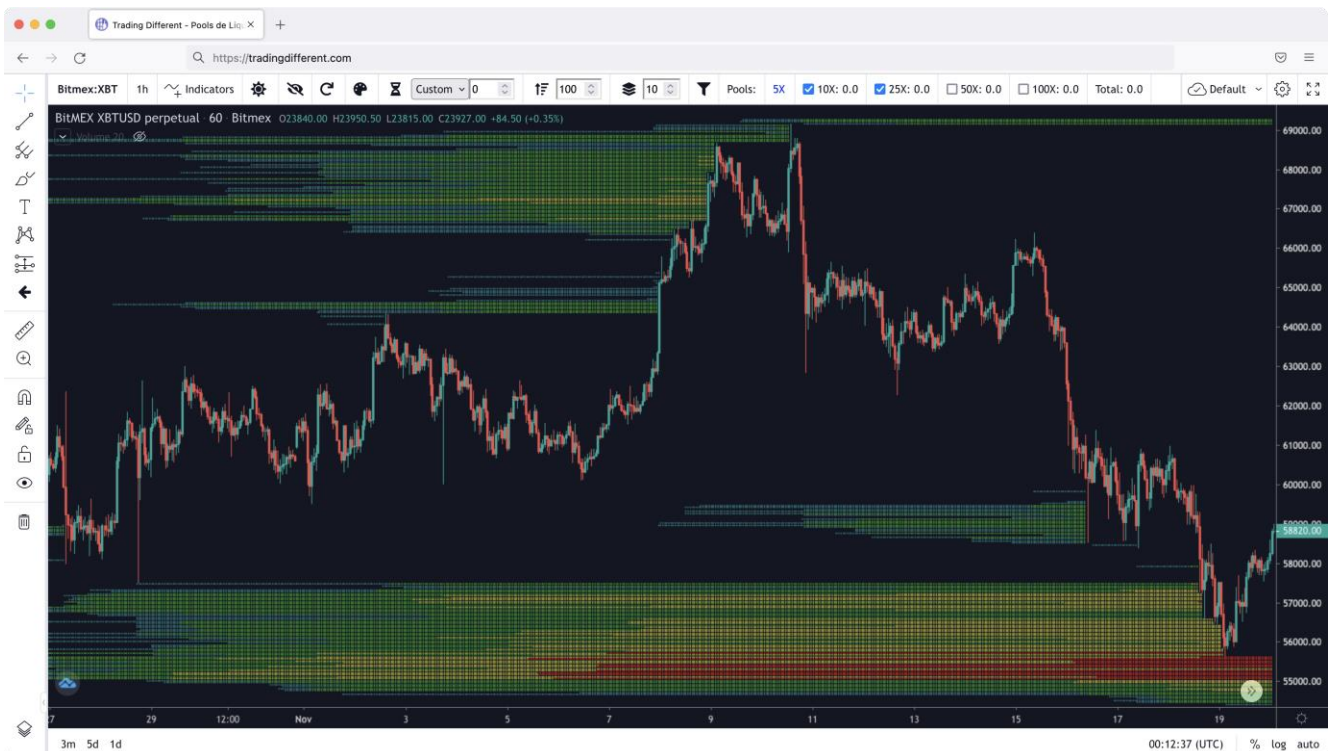
By operating the Liquidation Pools and knowing in advance the areas where most overleveraged traders will lose their positions, it is possible to make efficient decisions when placing BUY, SELL, Stop Loss and Take Profit orders. This considerably helps to minimize losses and maximize profits in the cryptocurrency market.

## Before and after the Liquidation Pools/Liquidation Heatmap

Liquidation Pools “OFF” (not activated).



Liquidation Pools “ON” (activated).



## Trading with Liquidation Pools/Liquidation Heatmap

Anticipation of trends is achieved with an algorithm that shows where the price would be most likely to go, driven by high-frequency bots.

Rebound zones can be known since when the price moves towards the liquidation Pools, it liquidates the positions and ends up rebounding.

Operations are optimized by allowing buying at minimum prices and selling at maximum prices.

Losses are reduced thanks to knowing where most overleveraged traders will lose, therefore, a better area to place Stop Losses can be identified.

Analysis is done with an intuitive chart using an interface similar to TradingView.

Market vision is improved by identifying manipulations.

## Hone your Trading strategy with Liquidation Pools/Liquidation Heatmap

We can improve three key aspects in trading using the Liquidation Pools:

FIRST: Improve the Entry Point to the market.

If my market analysis indicates a possible rise in the price. Then I do NOT choose any random price, to enter, I do not anticipate.

\*Graphic represents what not to do.



IMPROVE the entry point, waiting for the liquidations of the over-leveraged retailers, we know most of them will lose, so if we are planning to go Long, we wait for the long liquidations first and then we enter to the market at a much price.





SECOND: Improve the Take Profit. Do NOT keep a fixed Take Profit percentage, or something set blindly.

\*Graphic represents what not to do.



Optimize the Take Profit searching for an opposite Liquidity Pool, this is where the liquidity is higher.



THIRD: Improve the Stop Loss.

DO NOT place your Stop Loss randomly, or below the last low price, this is what all new traders do.

\*Graphic represents what not to do.



Place the Stop Loss a little before, to lose less, because if the price approaches the Liquidation Pool below it has a high probability of liquidating it.



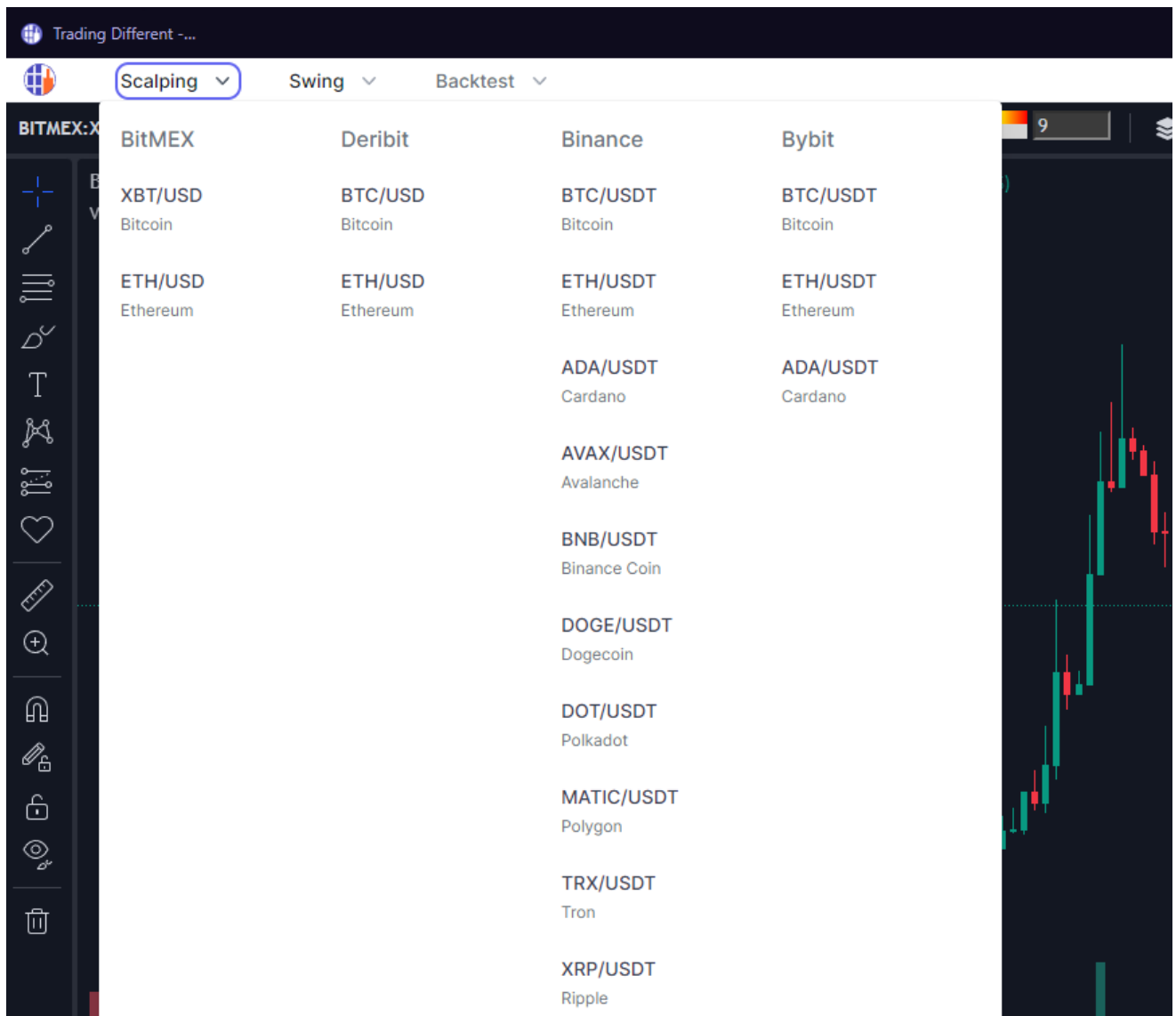
Another way is to place the Stop Loss outside of the Liquidation Pools, to avoid being hunted if the price moves just to do that.

## Crypto assets that can be traded with the Liquidation Pools/Liquidation Heatmap

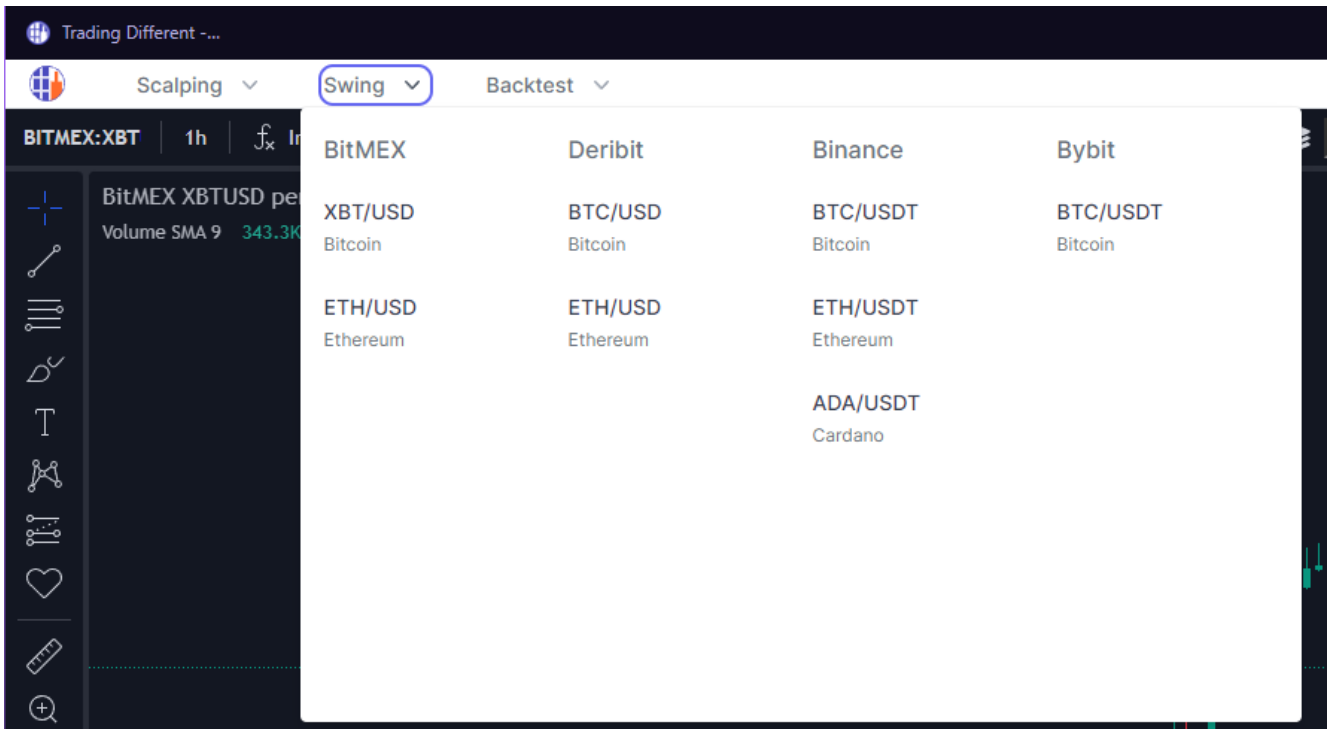
BTC (Bitcoin), ETH (Ethereum), ADA (Cardano), AVAX (Avalanche), BNB (Binance Coin), DOGE (Dogecoin), DOT (Polkadot), MATIC (Polygon), TRX (Tron), and XRP (Ripple).

### Overview of the Liquidation Pools/Liquidation Heatmap

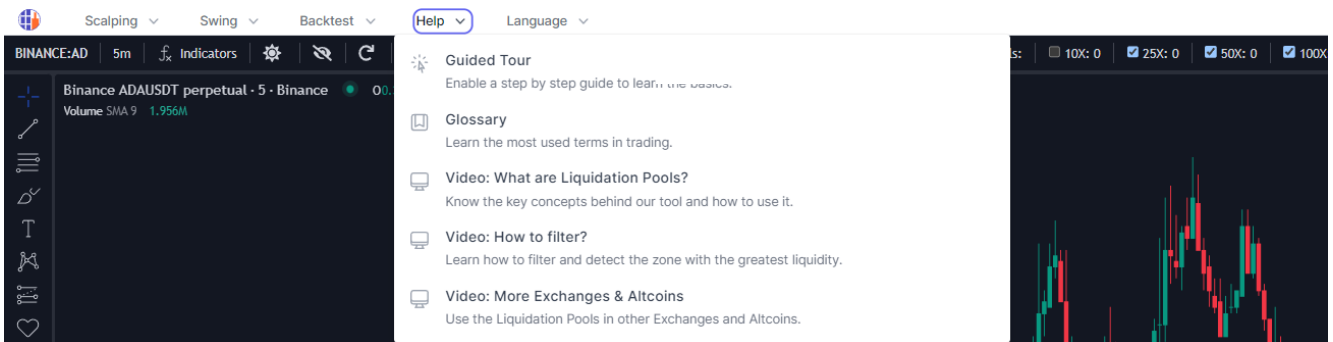
When starting, the trader can choose to view the scalping or swing charts, which are easily accessible in the top bar of the interface.



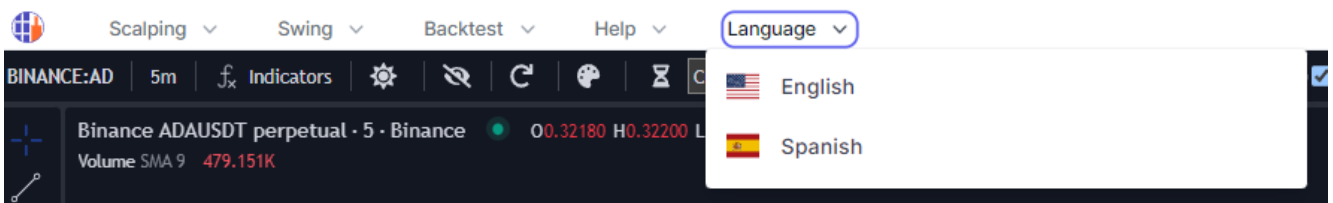
Inside the scalping or swing charts menu, the trader can choose the asset to visualize.



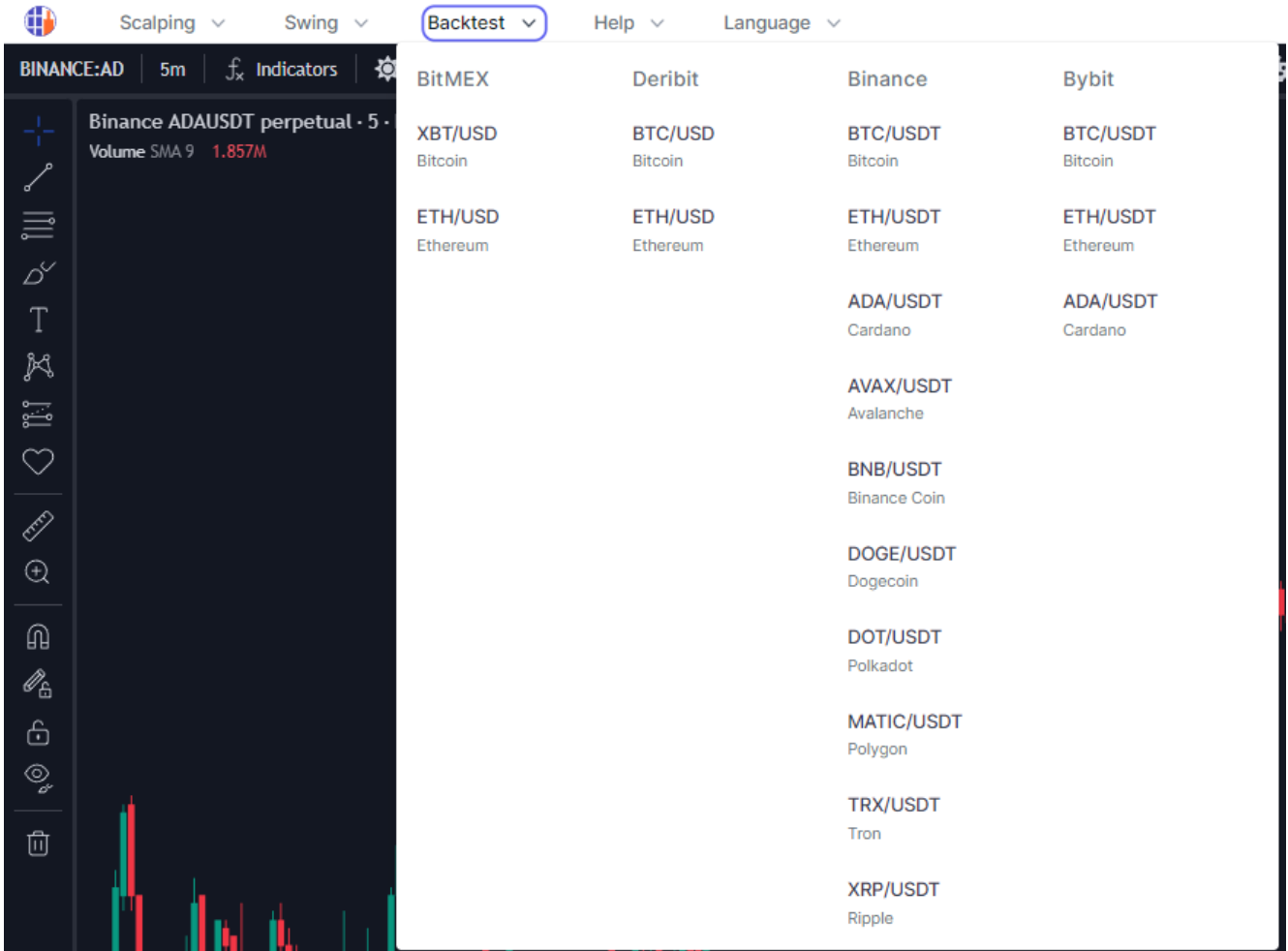
On the same top bar of the Liquidation Pools interface, clicking the help button allows to select a guided tour, a glossary of terms used in trading and video tutorials to learn how to use our tools.



The tool has a user-friendly language selector.



Trading Different knows the importance of executing a correct backtest to be able to detect patterns, make measurements and prepare trading strategies, for this reason, the top bar of the Liquidation Pools interface has an access button allowing backtesting of the supported assets. Using these charts you will be able to jump to custom dates.

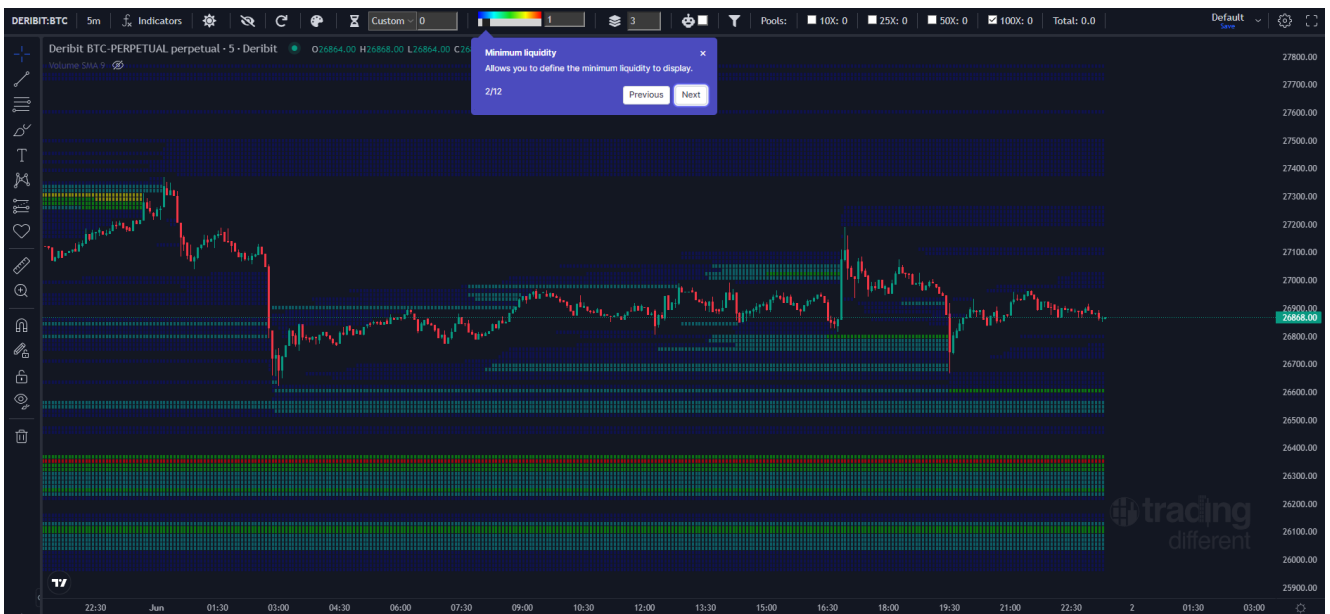


## Liquidation Pool/Liquidation Heatmap Filters: a personalized vision

The Liquidation Pools have a lot of information, that's why it's important to understand how to filter it. The user can choose different visualizations according to his trading system, selecting for example, recent or old liquidation pools, the minimum size for the liquidation pool and what leverages the liquidation pool represent.

Leverage filter: the trader has the freedom to select the leverage that suits his trading system, whether it is to operate pools close to the price or further from it.

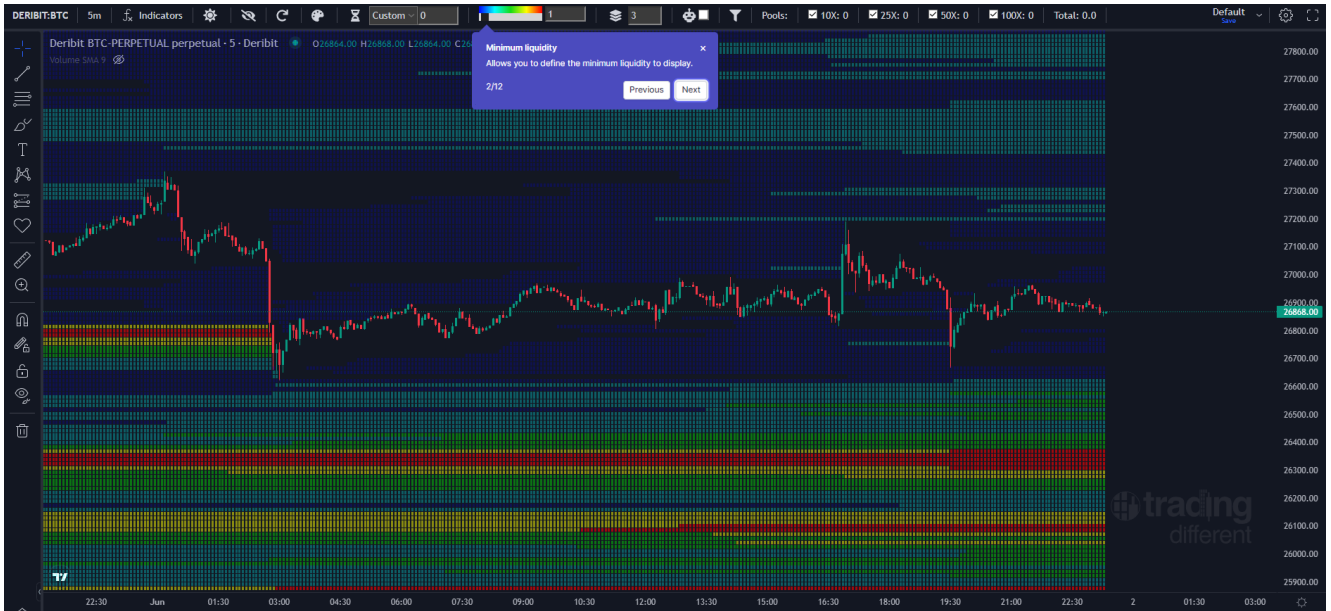
\*In image 1, we selected only 100x leverage, that means we are seeing only traders who entering using very high leverage, this is useful for fast scalping, with small price movements



\*image 1



\*In image 2, we have selected all the leverages. It is recommended always see the pools with all leverages to understand better the full picture and liquidity of the market.



\*image 2

Filter by minimum liquidity (volume):

The trader can set the minimum value for every pool to visualize, this is useful when you want to see only high liquidity pools only. When we talk about minimum liquidity, we refer to the minimum amount of liquidity for each line, every line represent a range of price, this range can be modified using the group input, and every line color depends on the size of the liquidity in that price range at that moment.

Filter by minimum liquidity in the lowest value (show all)



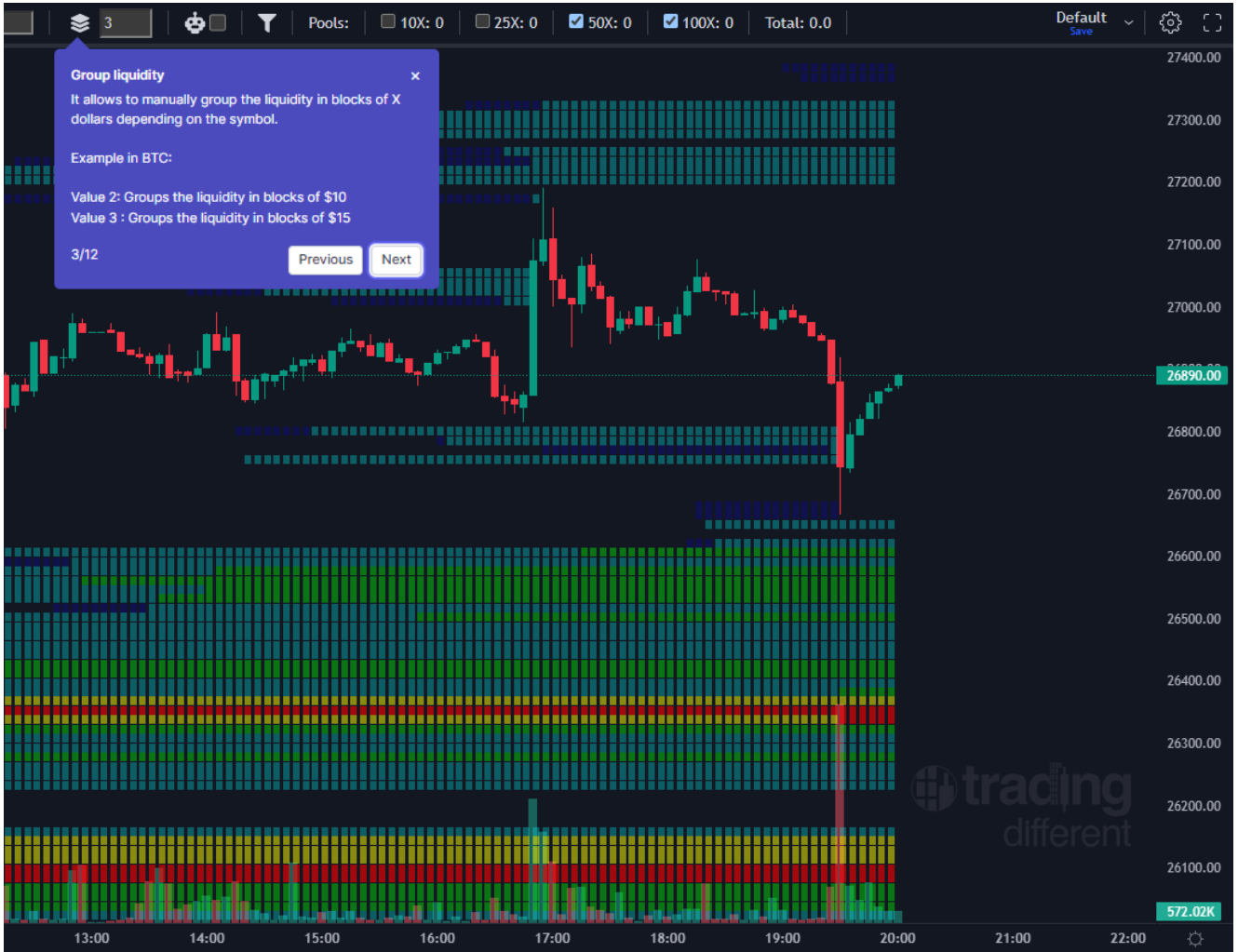
### Filter by minimum liquidity in value 5



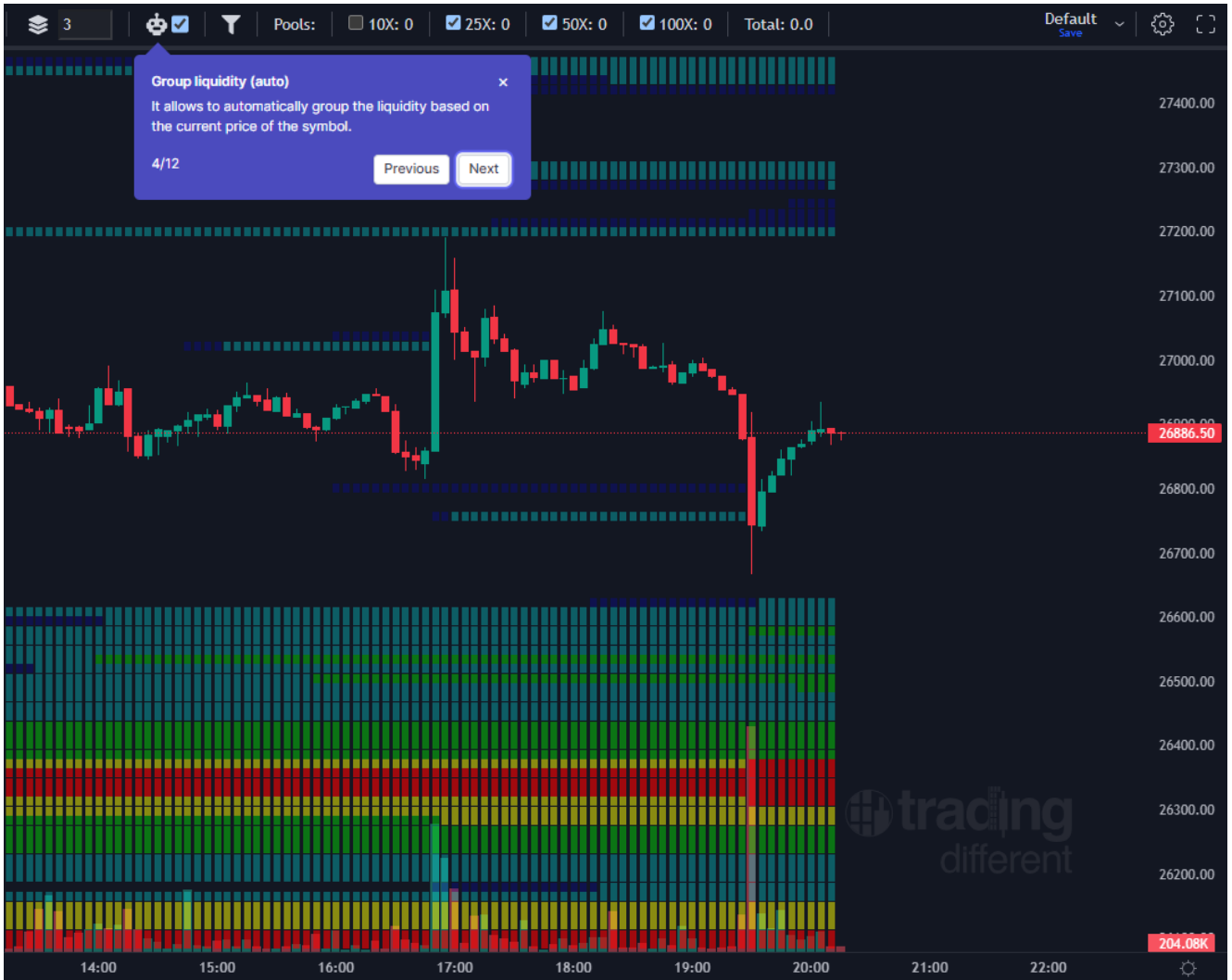
### Filter by minimum liquidity in value 20



Manual grouping: Every line of pools represent the liquidity in range of price, grouping pools can increase this price range for every line, this is useful to summarize better when seeing too many prices in the chart (also if you group pools the chart will run a bit faster)



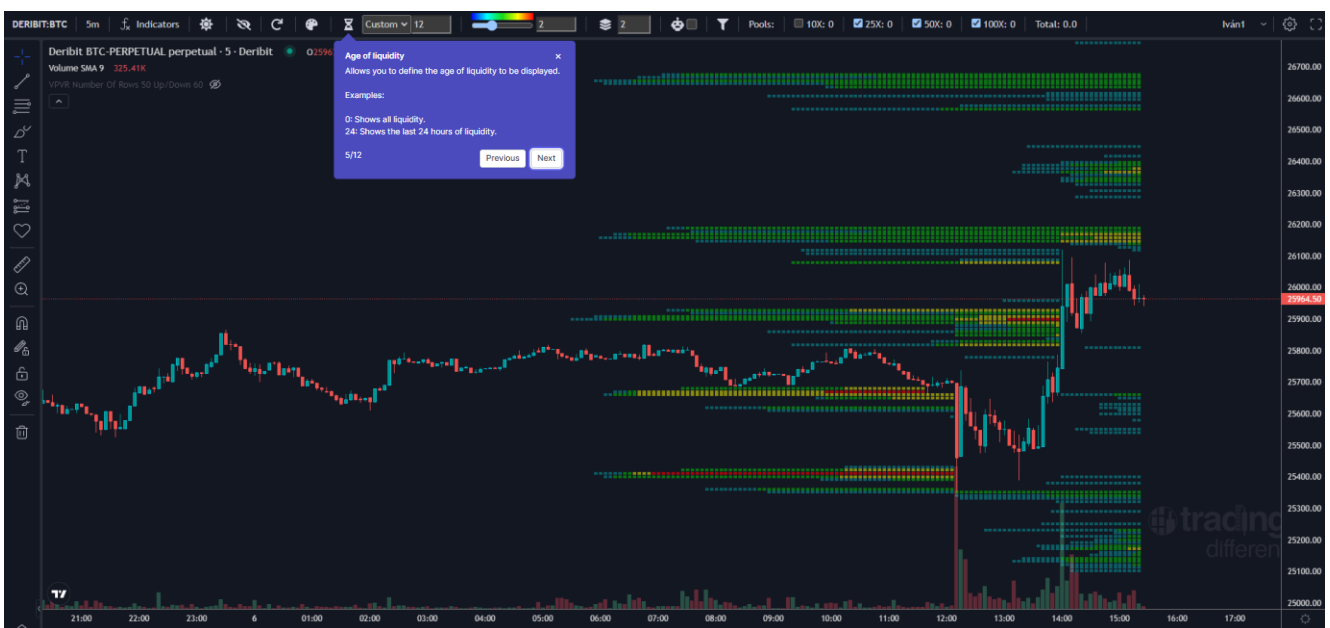
Automatic grouping: Checking this option will calculate the recommended group depending on the full price range you are seeing in the chart.



Filter liquidity by age: By default the chart will show all the liquidation pools, but with this filter you can see only the liquidity created at max at the age set (the number is hours for scalping and days for swing charts).

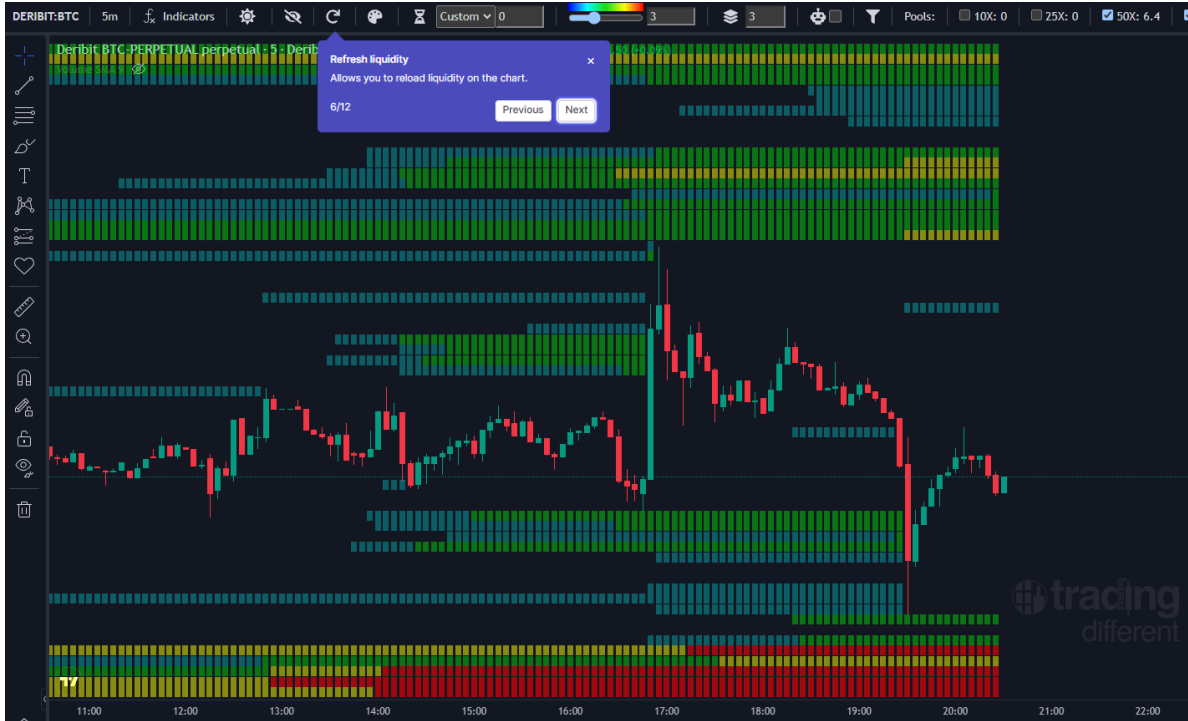
In the example below we have set the value to 12 hour, therefore only the liquidity created in the last 12 hours will be visible.

IMPORTANT! For this filter to work correctly, it is important you load and show in the chart the candles from the last 12 hours (or whatever you set in the filter) at least (can be more but if you are not seeing candles from at least 12 hours ago the system will miss information to calculate the liquidity for the last 12 hours)



\* This filter allows you to view only the Liquidation Pools created X hours ago. If you set 24 hours or less, we call to these Pools Fresh or “recent” (Fresh/Recent pools).

Refresh: This button reloads the pools, this could be useful if they are not loaded correctly for some reason (connection problem etc).

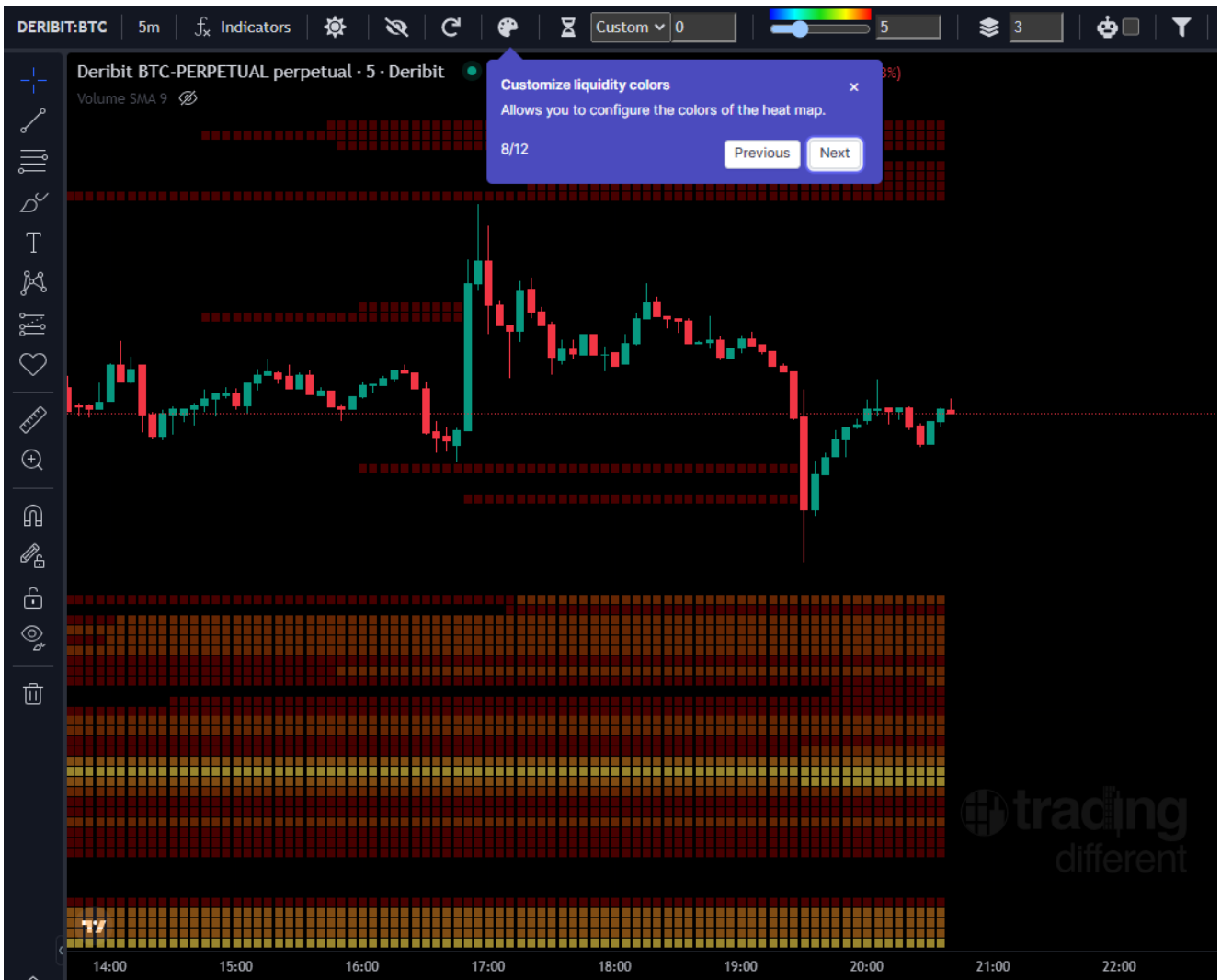


Show hide: this button allows to show or hide the liquidation pools/Liquidation Heatmap.



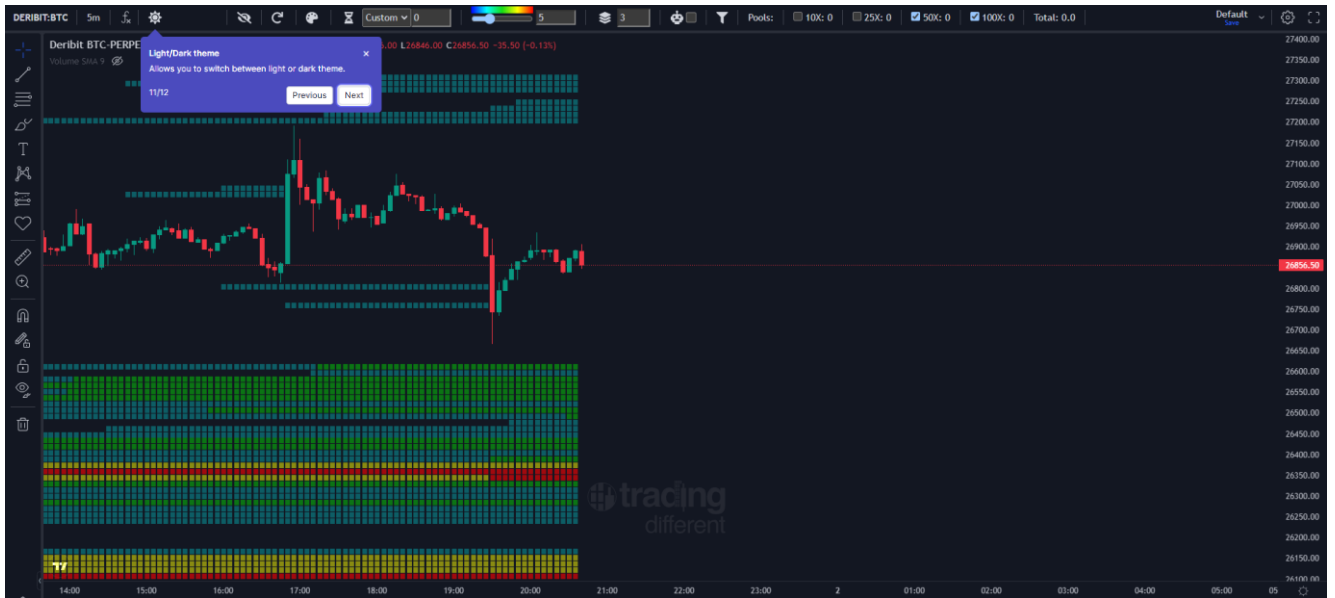


Color Customization: every line has a color depending on the size of the liquidity in that price range (and depending on the max liquidity visible in the chart). By default it uses classical heatmap colors (blue is small liquidity and red high liquidity) but the trader can choose any color of his preference.

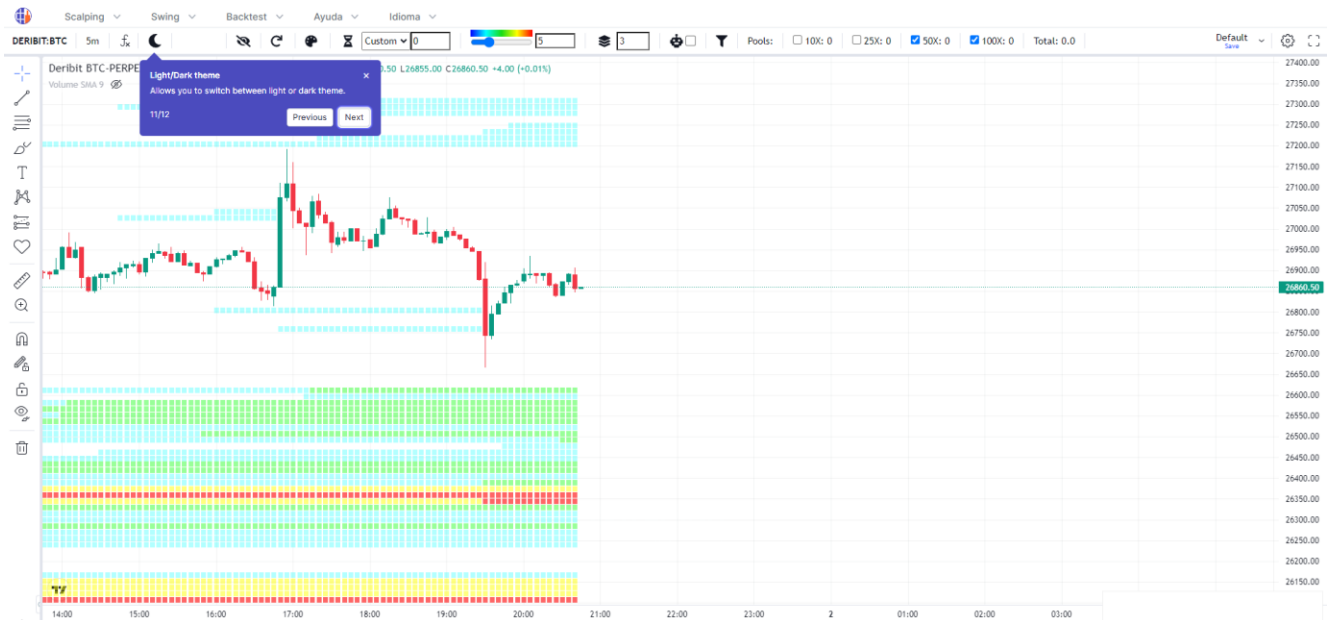


Light/dark mode selection: toggles the chart theme in dark or light modes

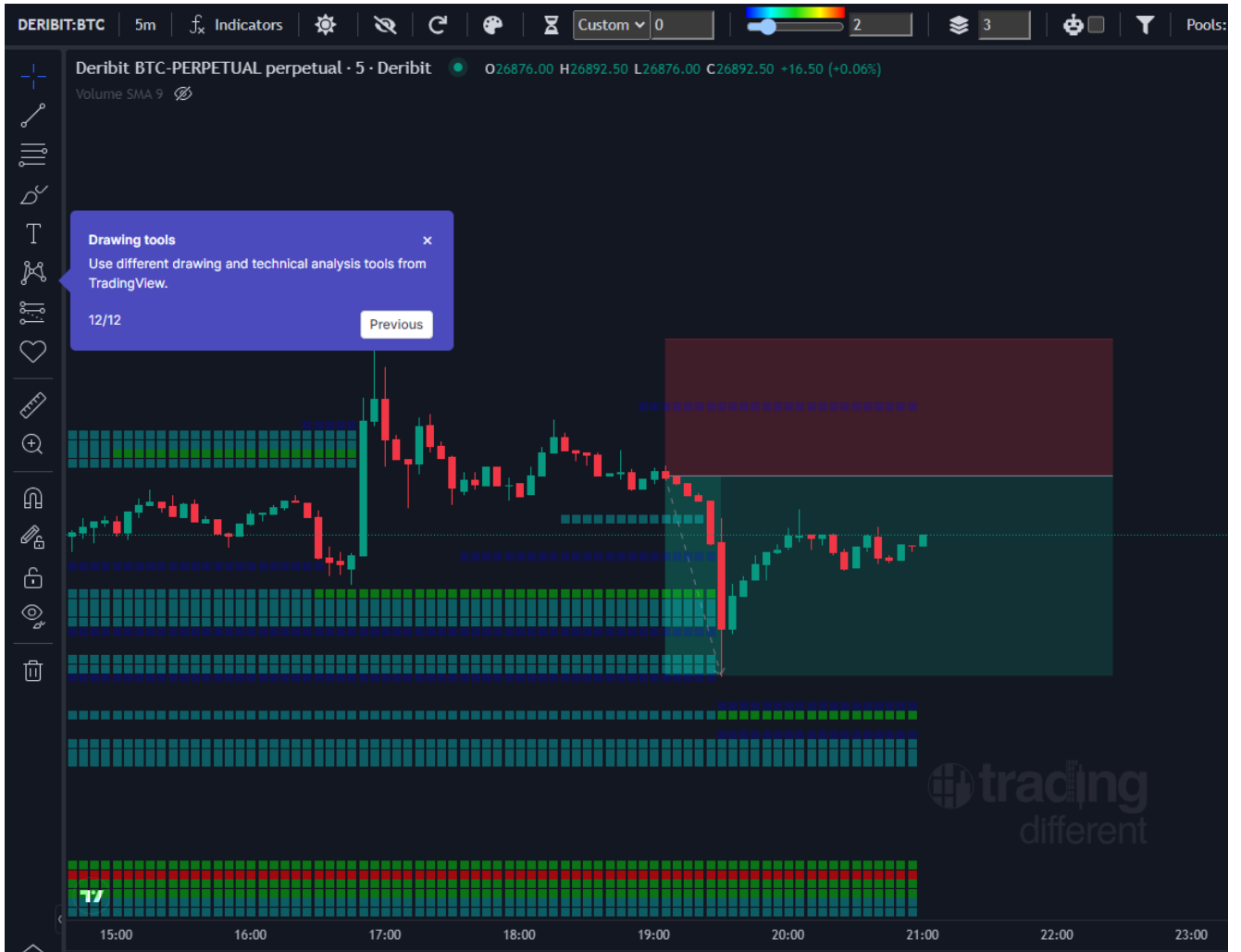
Dark mode



Light mode



Drawing tools: there are multiple tools to draw in the chart, these are the same used in TradingView



## Swing Trading Chart



The Swing Trading graph was designed for those traders who operate the Liquidation Pools in bigger price movements, swing traders sometimes looks for take profits from 10% to 50% and those trades can last weeks. 25x, 10x, 5x and 3x leverages are considered here. The temporality that can be used is 4 hours and 1day.

The new algorithm applied to the Swing graph, not only considers the Liquidation Points and Stop Loss of the traders, but also makes an estimate based on statistics, where these traders are taking Profits. In the example below, we can see how old liquidity is decreased in size for this reason.



## TrenDiff Trend Indicator



### TrenDiff: Trend indicator

Indicator that marks the main trend of the market and helps us to operate in the same direction, seeking the Liquidation Pools as Take Profit targets.



#### Long and Short Trends

Indicates Long and Short trends for extended movements.



#### Targets

It is complemented by the Liquidation Pools, which mark the Take Profit zones.



#### TrenDiff Strategy

Backtested strategy with more than 70% effectiveness.

[View strategy](#)

- The colored areas marked by the indicator (red or green) represent the trend strength in a 1-hour time frame (in the example above referenced by the white ellipse which is at +3 of the maximum uptrend).
- The light blue line represents the trend force in a 4-hour time frame.
- The orange dotted line represents the trend strength in 1 day.

Traders who operate the Liquidation Pools combined with the TrenDiff trend indicator use the 1-hour strength as a reference, displayed on a 5-minute chart. Considering an important signal of trend force values: +2 and +3 for BUY orders and -3 for SELL orders.

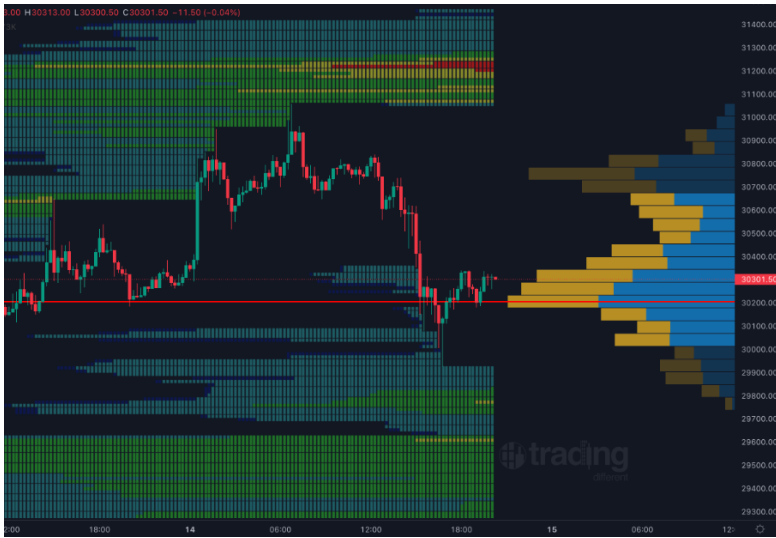
Here is a reference for different values:

- + 1 LOW UPWARD TREND
- + 2 MEDIUM UPWARD TREND (value used by traders)
- + 3 STRONG BULLISH TREND (value used by traders)
- - 1 LOW DOWNWARD TREND
- - 2 MEDIUM DOWNWARD TREND
- - 3 STRONG BEARISH TREND (value used by traders)

## Volume Profile Indicator

The "Volume Profile" allows a better analysis of the volume. Shows volume traded not by time but instead for ever price within a time period.

Volume at a given price is very valuable because it indicates which price levels are most important to large market participants. The more volume that accumulates at a specific price level, the more significant that price level becomes.



### Volume Profile

Volume grouped by price levels.



#### Point of Control (POC)

The price level with the highest traded volume.



#### Profile High/Low

The highest/lowest reached price level during the specified time period.

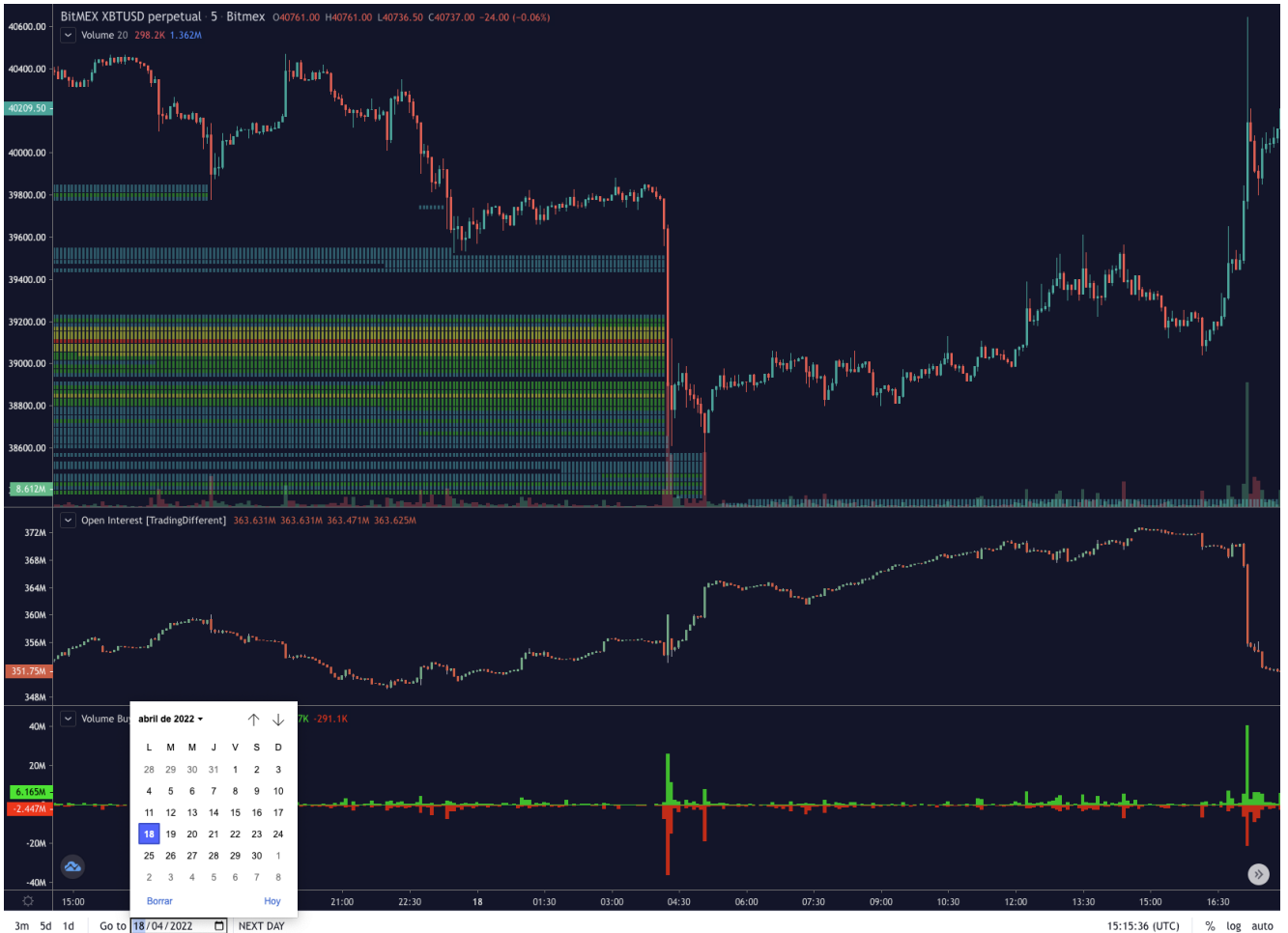


#### Value Area (VA)

The range of price levels in which a specified percentage of all volume was traded during the time period.

## Historical chart / Backtest

Designed for traders who want to measure the strengths and weaknesses of their trading strategies. It allows to jump to past dates to do a proper backtest.





## More Indicators

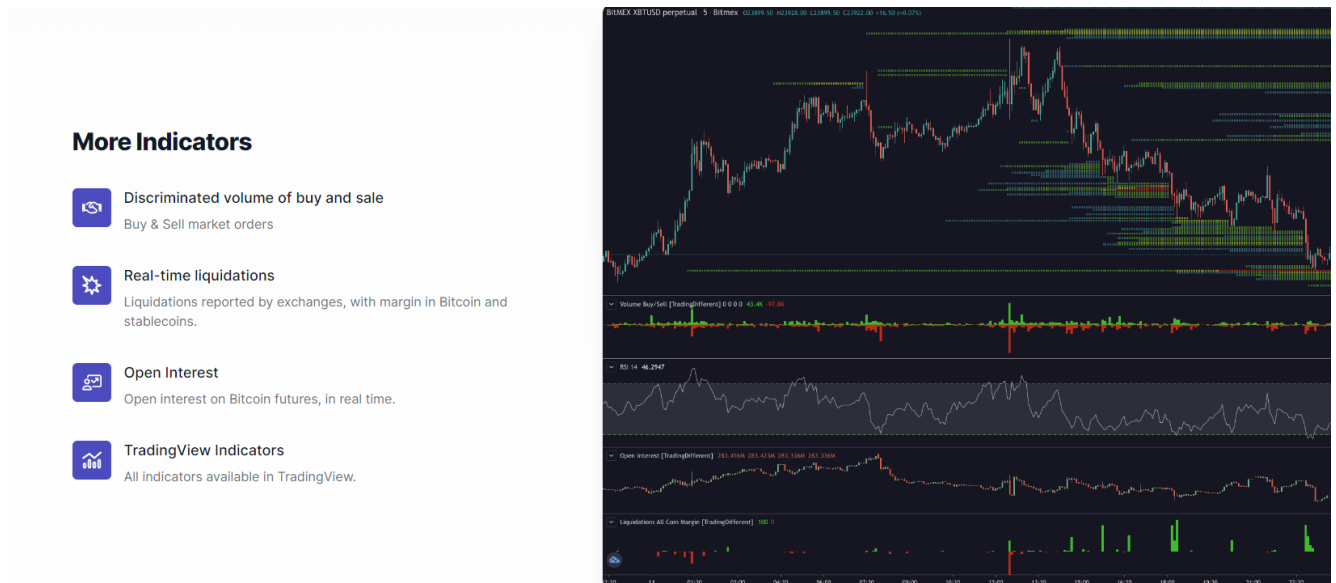
Discriminated volume for buy and sell: Market Buy & Sell orders.

Liquidations in real time: Liquidations reported by exchanges, using as margin Bitcoin and Stablecoins.

Open interest: open interest history and in real time.

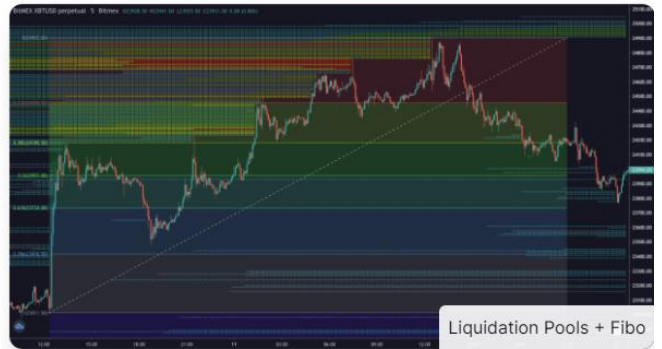
TradingView Indicators: all public indicators created by TradingView.

You can easily access to these indicators with right click on any part of the chart

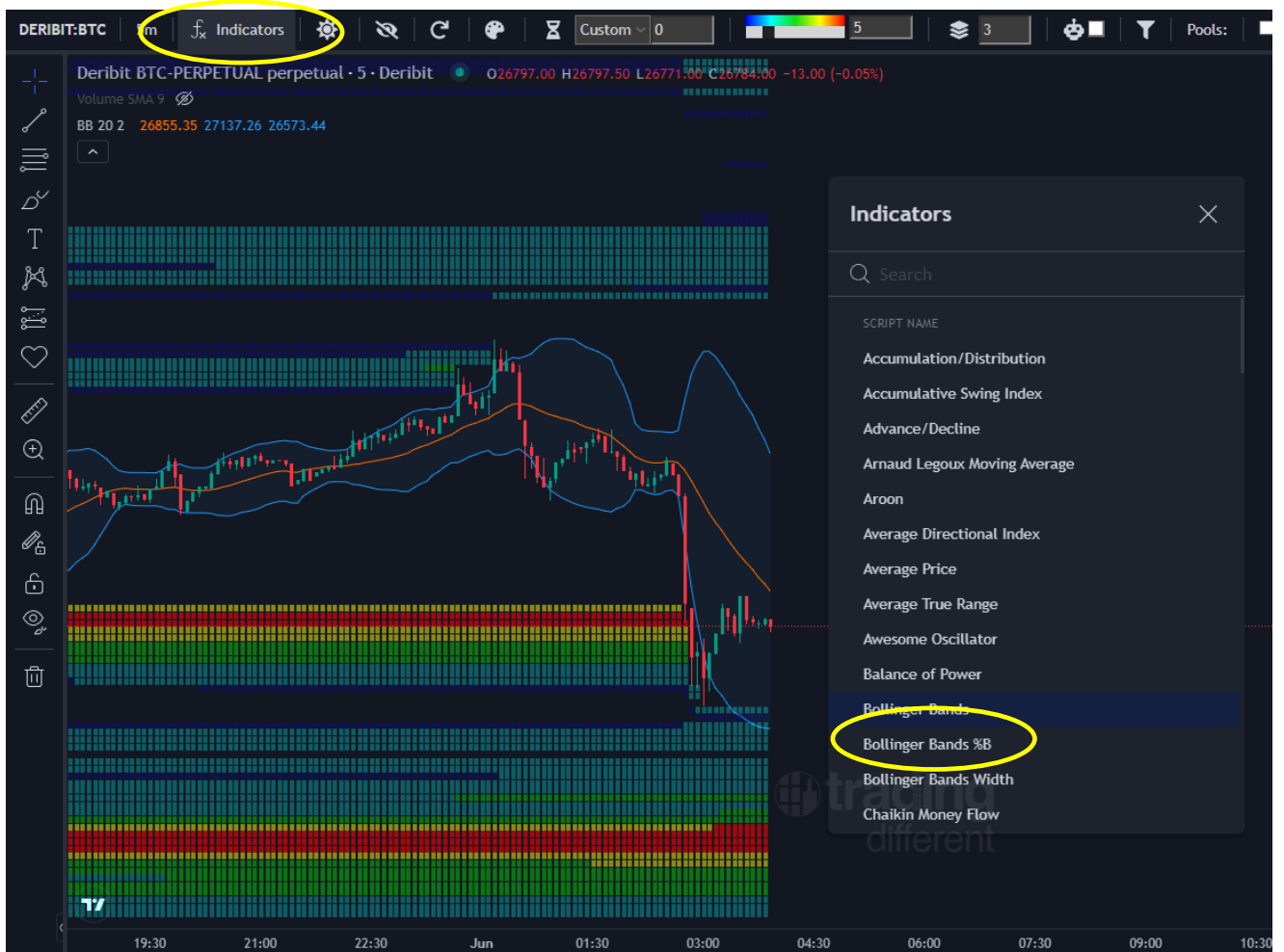


## Complement your own Trading systems with our Liquidation Pools/Liquidation Heatmap

Transform your operations into a Quantitative Trading system, complementing the indicators you use frequently, with our Liquidation Pools.



Traders can complement the Liquidation Pools with all the indicators offered by the TradingView library. Click on the "indicators" button which is located in the upper left part of the graph, and search for the indicator.



## High Frequency Chart

The Trading Different High Frequency indicator allows traders to understand which way the high frequency bots of the big traders (market makers, institutions, etc) are trading. It reads all the orders executing every millisecond, represented in a chart with 1 second candles.

The trader uses this indicator to trade in the same direction of high-frequency bots.

If the indicator is on and indicating in green (as in the example below), the preference will be to operate in LONG, otherwise, if the indicator is on and indicating in red, the preference will be to operate in SHORT.



The indicator is configurable according to market circumstances. User can enter HF indicator setting icon and adjust the following fields:

**REDUCE HF AFTER SECONDS:** Since high frequency bots operate very quickly at the millisecond level, this option allows the indicator to decrease its value after a certain number of seconds have passed.

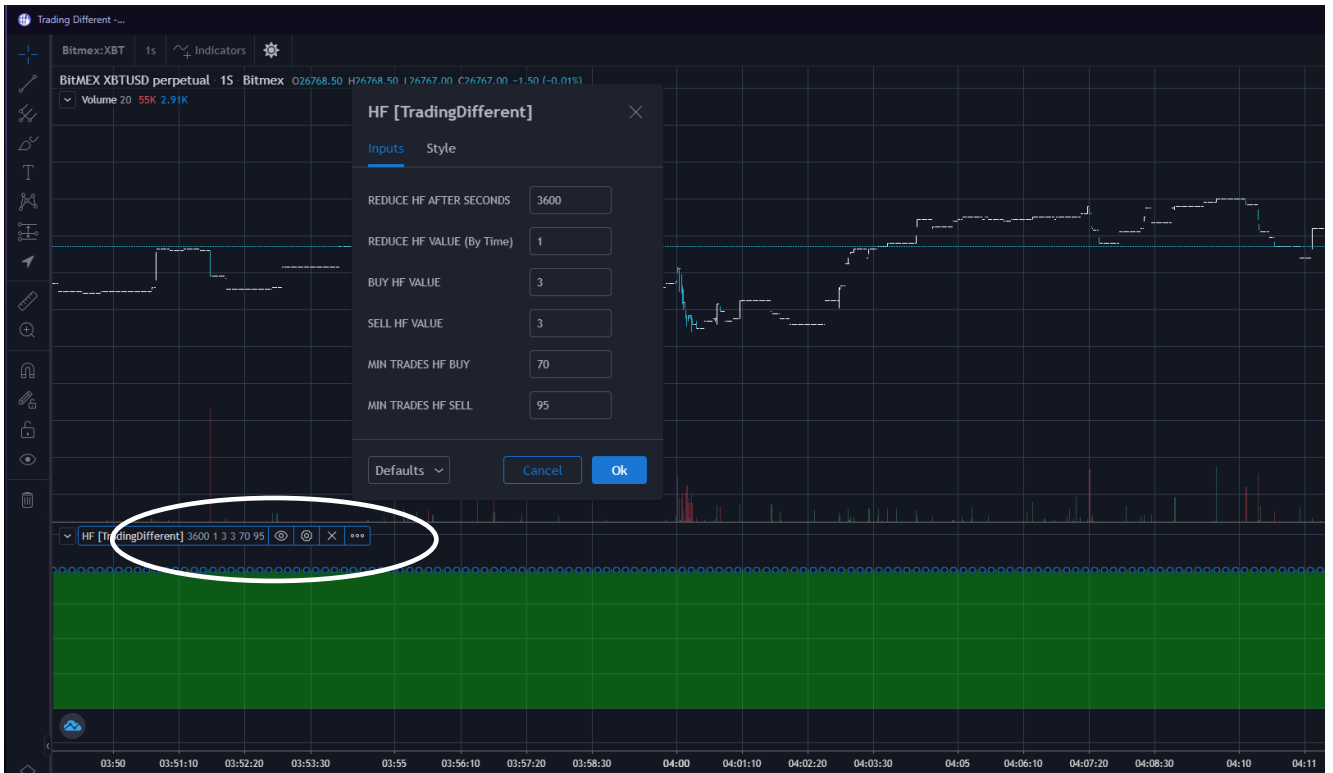
**REDUCES HF VALUE:** It will indicate how much to reduce once the seconds that were placed in the first field have elapsed.

**BUY HF VALUE:** will indicate how many units the indicator will increase each time BUY trades are detected.

**SELL HF VALUE:** will indicate how many units the indicator will increase each time trades are detected in SELL.

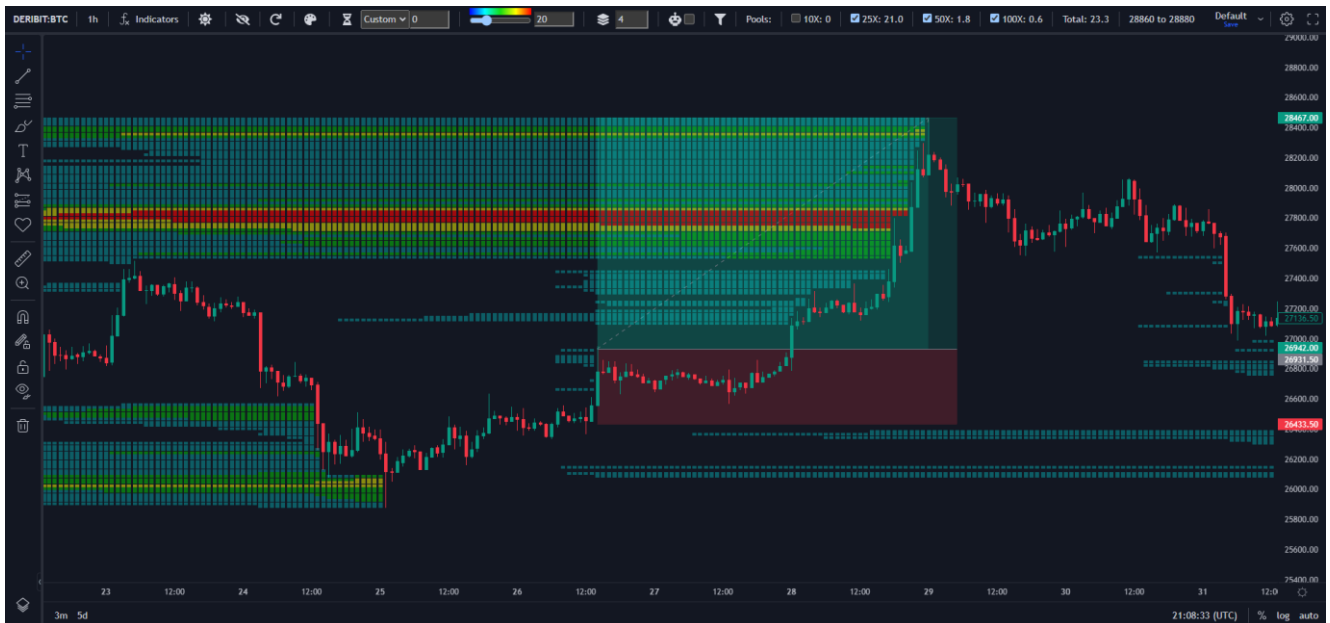
MIN TRADES HF BUY: will indicate how many BUY trades in a second are needed for a valid buy signal from HF bots

MIN TRADE HF SELL: will indicate how many SELL trades in a second are needed for a valid sell signal from HF bots



## CONCLUSIONS

Liquidation Pools/Liquidation Heatmap professionalize the trader by transforming their operations from improvised to efficient with a better RISK/REWARD ratio. This allows you to not only anticipate price movements, but also to visualize which areas are going to generate large liquidations from over-leveraged and inexperienced traders.



Identify key areas: Liquidation Pools make it possible to identify the price levels at which large volumes of liquidations occur in the market. Knowing these zones provides valuable information about possible entry or exit points in your trades.

Confirmation of trends: By analyzing the Liquidation Pools + TrenDiff, traders can get confirmation of the direction of the dominant trend. If the Liquidations Pools are in line with the uptrend or downtrend, this reinforces the validity of the trend and provides more confidence when making decisions.

Better decision making: Having access to accurate information about the liquidity zones in an unregulated and savage market as the cryptocurrencies, traders can take better decisions. This allows them to improve their trading strategy, manage risk more effectively, and minimize losses.

## CONTACT

[support@tradingdifferent.com](mailto:support@tradingdifferent.com)

## SOCIAL NETWORKS:

Web: <https://www.tradingdifferent.com>

Instagram: <https://www.instagram.com/tradingdifferent/>

Facebook: <https://www.facebook.com/tradingdifferent/>

Twitter: <https://twitter.com/tradingdiff>

Youtube: <https://www.youtube.com/@TradingDifferent>